

TO : Customer

DATE : 2021.05.25

**GREEN C&C TECH Co.,Ltd
75, Saneop-ro92beon-gil,
Gwonseon-gu,Suwon-si, Gyeonggi-do
KOREA 16643
TEL : 82-31-373-3623~3625
FAX : 82-31-373-3610**

DOCUMENTATION FOR APPROVAL

**PRODUCT : LED BACKLIGHT DRIVER (RoHS)
MODEL NAME : GH734A(A11)
GCCT NAME : GCCT734AK**

APPROVAL	CHECKED	WRITTEN

PLEASE RETURN ONE DOCUMENT AFTER APPROVED SIGN.

GREEN C&C TECH	LED DRIVER SPECIFICATION GH734A(A11)	Publishing Date Reforming Date	2021.05.25
----------------	---	-----------------------------------	------------

NO	Date	REVISION	Page
REVISION HISTORY			

REV.														
Page														
REV.	0	0	0	0	0	0	0	0	0	0	0	0	0	0
Page	1	2	3	4	5	6	7	8	9	10	11	12	13	14
Page Rev.											0	Page	1	

GREEN C&C TECH	LED DRIVER SPECIFICATION GH734A(A11)	Publishing Date Reforming Date	2021.05.25
----------------	---	-----------------------------------	------------

1. APPLICATION

This Document Specified The Detailed Product Requirement of LED driver
GH734A(A11)

2. SUITABLE LOAD

LCD MODULE : 8 Strings LED BLU TFT LCD

3. ELECTRICAL CHARATERISTICS

3.1. Absolute Maximum Ratings

Item	Symbol	Spec.	Unit	Remarks
Input Voltage 1	Vin	10.8~26.4	V	
Input Voltage 2	ON/OFF	5.25	V	
Operating Temperature	Top	0~60	℃	
Storage Temperature	Tstg	-30~80	℃	
Relative Humidity	RH	80	%	

3.2. Control Signal

PIN No.	Symbol	Status	Action	Remarks
CN1 #12	ON/OFF	HIGH	LED - ON	2.4 ~ 5.25V
		LOW	LED - OFF	0.8 V Max

GREEN C&C TECH	LED DRIVER SPECIFICATION GH734A(A11)	Publishing Date	2021.05.25
		Reforming Date	

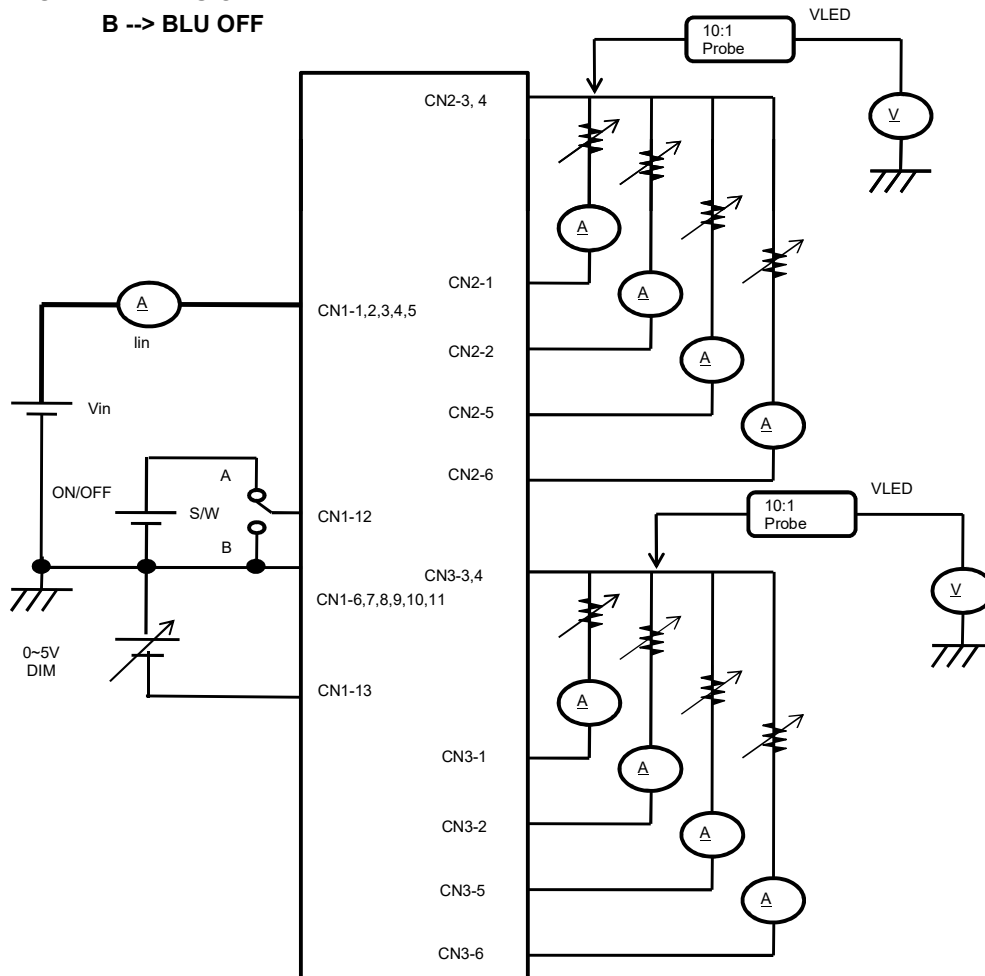
3.3. Output Characteristics

Item	Sym.	Condition	Min.	Typ.	Max.	Unit
Input Voltage	Vin	-	10.8	-	26.4	Vdc
Input Current	Iin	Vin=12V, Dim=0V	-	-	3.5	A
Output Current	Iout (Max)	Vin=12V, Dim=0V	90.0	100.0	110.0	mAmean
	Iout (Min)	Vin=12V, Dim=5V	15.0	20.0	25.0	
Backlight ON/OFF Control	ON	-	2.4	-	5.25	Vdc
	OFF	-	-0.3	-	0.8	

* Output Voltage is greater than Input Voltage for at least 3V or more.

3.4. Test Circuit

- S/W : A --> BLU ON
B --> BLU OFF



GREEN C&C TECH	LED DRIVER SPECIFICATION GH734A(A11)	Publishing Date Reforming Date	2021.05.25
----------------	---	-----------------------------------	------------

4. INTERFACE

4.1. CN1 Connector (Input) : 20022WR-14AML (YEONHO) or Equivalent

PIN No.	Symbol	Description
1,2,3,4,5	VIN	Voltage Input : 12V, 24V (Typ.)
6,7,8,9,10,11	GND	Ground
12	ON/OFF	LED DRIVER ON/OFF Control
13	A-DIM	Analog 0V(MAX) ~ 5V(MIN)
14	P-DIM	No Connection

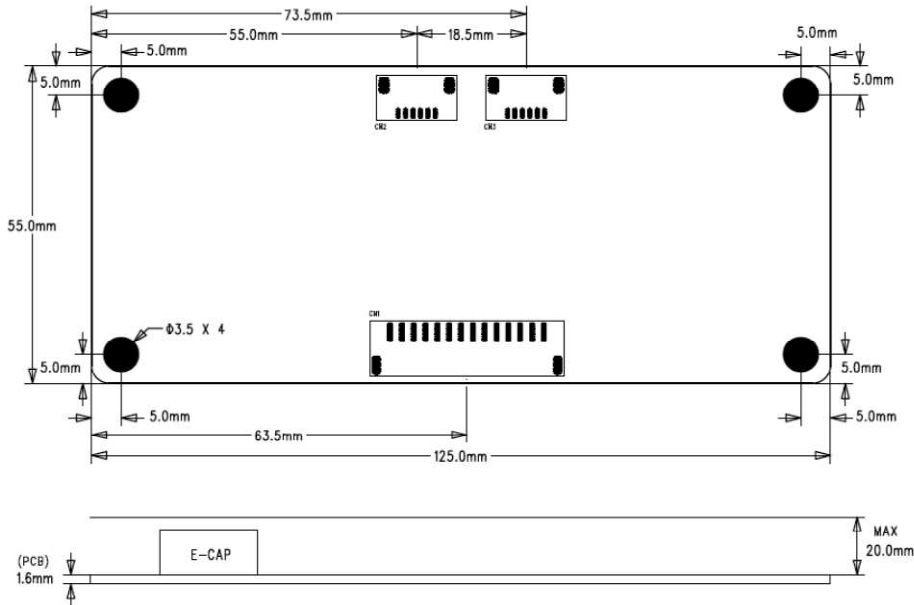
4.2. CN2,CN3 Connector (Output) : 12507WR-06L (YEONHO) or Equivalent

PIN No.	Symbol	Description
1	FB1	Feedback1
2	FB2	Feedback2
3	VLED	System Output
4	VLED	System Output
5	FB3	Feedback3
6	FB4	Feedback4

GREEN C&C TECH	LED DRIVER SPECIFICATION GH734A(A11)	Publishing Date Reforming Date	2021.05.25
----------------	---	-----------------------------------	------------


5. APPERANCE (Unit : mm)

(Tolerance : +0.8mm, -0.2mm)



6. NOTATION OF LOT NUMBER

MARKING : BOTTOM



GH734A(A11)

G21 01A

0001 AK

→ ① USER MODEL CODE

→ ② PRODUCTION MANAGEMENT CODE

→ ③ SERIAL NUMBER & CONTROL CODE

①	GH734A(A11)	: USER MODEL CODE
	G	: MANUFACTURER CODE (GREEN C&C TECH)
	21	: YEAR OF PRODUCT
		19 → 2019 , 20 → 2020 , ... , 29 → 2029
②	01	: WEEK OF PRODUCT 01,02,03,04,...52
	A	: PUBLICATION NUMBER A,B,C,...,Z,0,1,2,...,9
③	0001	: SERIAL NUMBER 0001,0002.....9998,9999
	AK	: GCCT CONTROL MODEL CODE

GREEN C&C TECH	LED DRIVER SPECIFICATION GH734A(A11)	Publishing Date	2021.05.25
		Reforming Date	

7. PART LIST

SYMBOL	NAME	1st		2nd	
		TYPE No	MAKER	TYPE No	MAKER
U1,U2	IC	MP3391EF	MPS		
U3		BA10358F	ROHM	Equivalent	
Q1,Q51	FET	AP9997GH	APEC	Equivalent	
D1,D2,D51,D52	DIODE	B290	DIODES	Equivalent	
C1	C-ELEC	NXH Series 470uF/35V	SAMYOUNG	Equivalent	
C25,C75		NXA Series 15uF/100V	SAMYOUNG	"	
C2,C80,C83	MLCC	CL10B104KB	SEMCO	Equivalent	
C11,C13,C61,C63		CL21A225KA	"	"	
C12,C62		CL21B105KB	"	"	
C14,C17,C64,C67		CL10A105KA	"	"	
C20,C70		CL10C101JB	"	"	
C21,C71		CL31B105KC			
C85,C91		CL10B102KB	"	"	
R1		CHIP-R	RM06JTN102	TA-I TECH	Equivalent
R2,R80	RM06JTN224		"	"	
R11,R61	RM10JTN100		"	"	
R12,R62	RM06JTN623		"	"	
R13,R16,R19,R25, R26,R63,R66,R69, R75,R76	RM06JTN104		"	"	
R14,R64	RM06JTN204		"	"	
R17,R67	RM06JTN273		"	"	
R18,R68	RM06JTN4R7		"	"	
R20,R21,R22,R70, R71,R72	RL12FTNR200		"	"	
R23,R73	RM06JTN101		"	"	
R27,R77	RM06JTN432		"	"	
R82,R84,R90	RM06JTN513		"	"	
R86,R87,R92,R93	RM06JTN153		"	"	
R96	RM06JTN105		"	"	

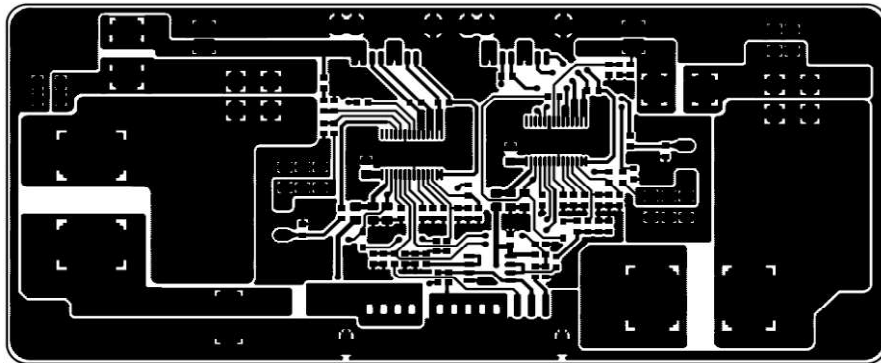
GREEN C&C TECH	LED DRIVER SPECIFICATION GH734A(A11)	Publishing Date	2021.05.25
		Reforming Date	

7. PART LIST

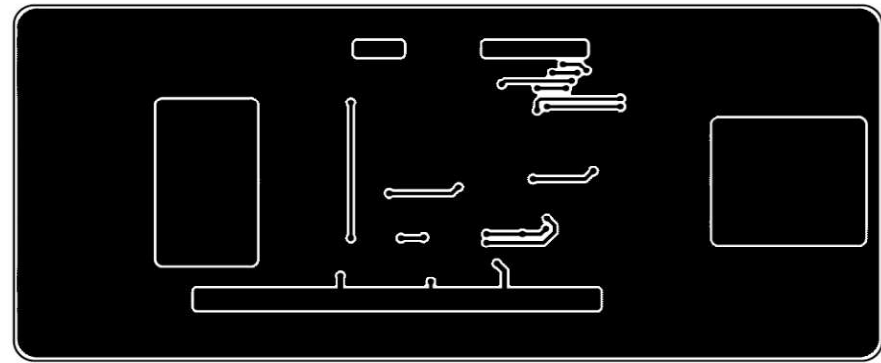
SYMBOL	NAME	1st		2nd	
		TYPE No	MAKER	TYPE No	MAKER
F1	FUSE	CCF1N7	KOA	CB61F7A	Cooper Bussmann
		451007	LITTELFUSE	453007	LITTELFUSE
L1,L51	Inductor	SPI-1260SDN-470	SEJIN	Equivalent	
L2,L52		PNL4020-100M	SEJIN	Dong An	
CN1	Connector	20022WR-14AML	YEONHO	Equivalent	
CN2,CN3		12507WR-06L	YEONHO	"	
PCB	PCB	GH734A REV0.0	SEOKANG	GH734A REV0.0	TECOS
		GH734A REV0.0	JDM	GH734A REV0.0	SKY Technlogy

GREEN C&C TECH	<p style="text-align: center;">LED DRIVER SPECIFICATION</p> <p style="text-align: center;">GH734A(A11)</p>	<p>Publishing Date</p> <p>Reforming Date</p>	<p style="text-align: center;">2021.05.25</p>
----------------	--	--	---

8. PCB LAYOUT



TOP LAYER



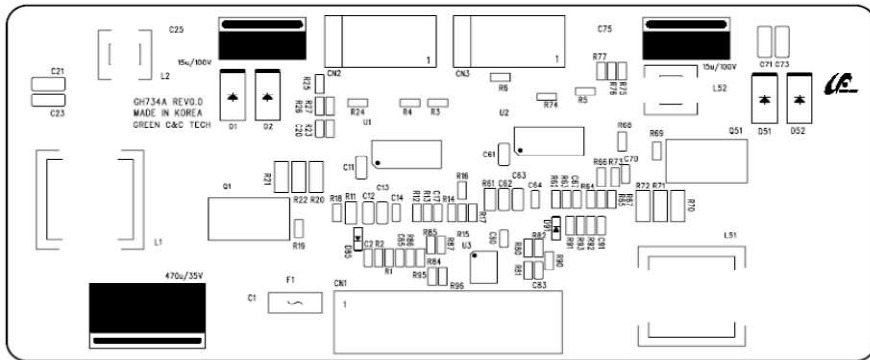
BOTTOM LAYER

GREEN C&C TECH

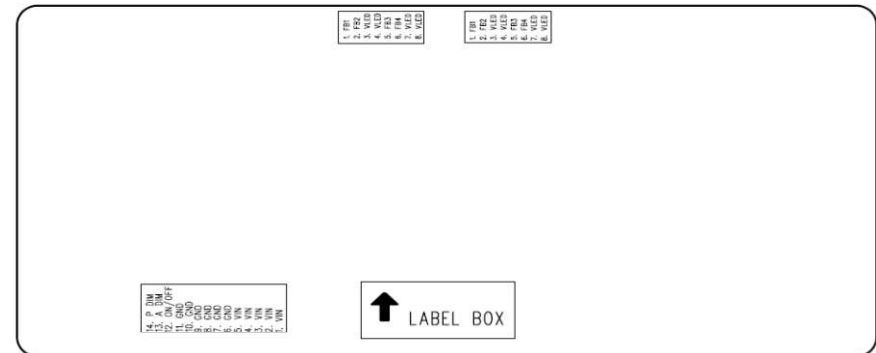
LED DRIVER SPECIFICATION
GH734A(A11)

Publishing Date
Reforming Date

2021.05.25

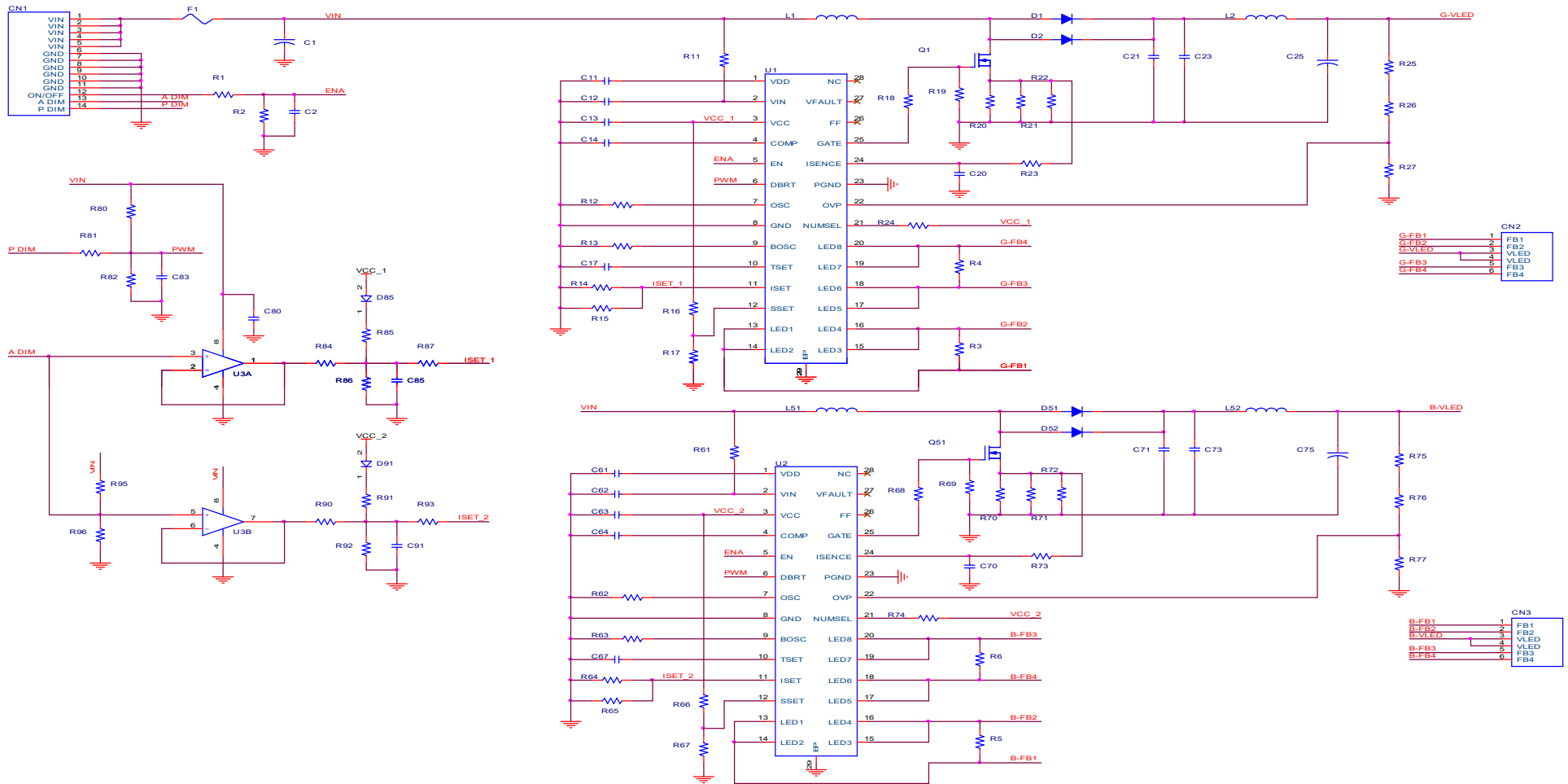


SILK SCREEN TOP



SILK SCREEN BOTTOM

9. CIRCUIT



GREEN C&C TECH	LED DRIVER SPECIFICATION GH734A(A11)	Publishing Date Reforming Date	2021.05.25
----------------	---	-----------------------------------	------------

10. RELIABILITY TEST SPEC.

NO.	ITEM	Conditions and Method
1	High Temperature Storage Test	Temp : 80 °C Duration : 250hrs
2	Low Temperature Storage Test	Temp : -30 °C Duration : 250hrs
3	High Temperature High Humidity Operation Test	Temp : 60 °C Humidity : 95%RH Duration : 250hrs
4	Signal On/Off Test	Temp : Normal Temperature On-Off Signal On 10sec / Off 10sec Power on full Load 30,000 cycles
5	Thermal Shock Test	Temp : -20 °C ↔ 70 °C, 100 cycles (30min) (30min)
6	High Temperature Operation Test	Temp : 60 °C Duration : 250hrs
7	Low Temperature Operation Test	Temp : 0 °C Duration : 250hrs

GREEN C&C TECH	LED DRIVER SPECIFICATION GH734A(A11)	Publishing Date Reforming Date	2021.05.25
----------------	---	-----------------------------------	------------




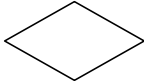
11. FLOW CHART

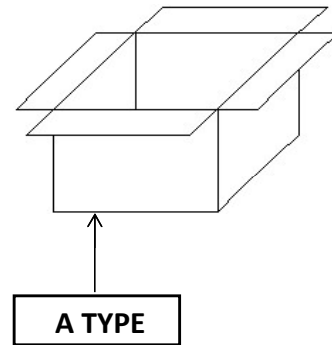
MODEL (TYPE)	GH734A(A11)	REVISION	5
WRITER	T.W.LEE		
FLOW CHART	PROCESS	EQUIPMENTS	Remark
	Raw Material		PART LIST
	Solder Printing	Cream-solder Printer	
	Surface Mounting	Low-high Mounter	
	Reflow Soldering (CTQ)	Reflower	
	Visual Inspection (AOI)	Microscope, Vision-Master	
	Label attachment	Marking	
	Preparing Process		
	Soldering by Hand for Discrete Parts		
	Spreading Silicon	Silicon Dispenser	
	Insert Lead Parts		
	Wave-Soldering	Wave-Soldering Machine	
	Visual Inspection		
	PCB Division		
	Aging	Power Supply, Aging Box	2hrs
	Electrical Characteristics inspection	Testing System, Testing JIG	
	Insulator Attachment		
	Bar-Code Reading	Bar-Code Reader	
	Package		
	Outgoing Inspection	Testing System, Testing JIG	List of Inspection
	Shipping		
Based on Standard Rule	GCCT734AK		

GREEN C&C TECH	LED DRIVER SPECIFICATION GH734A(A11)	Publishing Date	2021.05.25
		Reforming Date	

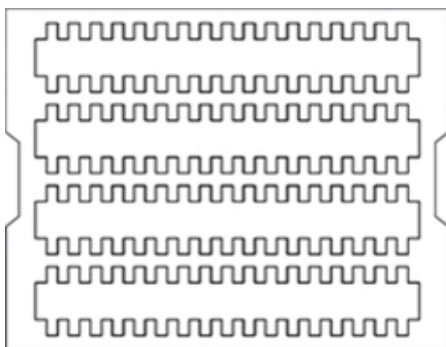
12. PACKING

12.1. BOX

 <small>LEAD-FREE</small>		 	 L/C NO : C/T NO : MADE IN KOREA
1. Customer			
2. PART NAME	GH734A(A11)		
3. PO NO			
4. Q'ty	000 EA		
5. Date	00.00.00		
6. LOT NO			



12.2. TRAY



SYMBOL	TYPE NO
PACKING-TRAY	393*324*73
PACKING-BOX	415*340*332
PACKING-PAD	400*325*5

1 TRAY : 34EA (GR2021)
1BOX : 4 TRAY (136EA) - A TYPE

GREEN C&C TECH	LED DRIVER SPECIFICATION GH734A(A11)	Publishing Date Reforming Date	2021.05.25
----------------	---	-----------------------------------	------------

13. Material list for safety GH734A(A11)

SYMBOL	NAME	TYPE No	MANUFACTURER	DESCRIPTION
F1	FUSE	CCF1N7	KOA	UL FILE NO. : E171861
		451007	LITTELFUSE	UL FILE NO. : E10480 CSA FILE NO : LR29862
		453007	LITTELFUSE	UL FILE NO. : E10480 CSA FILE NO : LR29862
		CB61F7A	COOPER BUSSNANN	UL FILE NO. : E19180
PCB	Printed Writing Board	FR4	SEOKANG	UL FILE NO. : E150774
			JDM	UL FILE NO. : E221964
			TECOS	UL FILE NO. : E214879
			SKY TECHNOLOGY	UL FILE NO. : E513927
CN1	Connector	20022WR-14AML	YEONHO	UL FILE NO. : E108706
CN2,CN3	Connector	12507WR-06L	YEONHO	UL FILE NO. : E108706