



**55.0" PCAP Solution
12050173
eTP550W3419-PS**

Doc-Revision: 002

Date: 2021-10-29

Table of contents

1	Scope	3
2	Touch Sensor and Cover Glass	3
2.1	Technical Parameters.....	3
2.2	Reliability Tests.....	3
3	Recommended Touch Controller	4
4	Optical Inspection Criteria and Handling Recommendations	4
4.1	Optical Inspection Criteria.....	4
4.2	Handling Recommendations	4
5	Appendix A: Technical Drawing	5
6	Revision History.....	6

1 Scope

DATA MODUL's PCAP solution 12050173 consists of a 55.0" capacitive touch screen. Please note that this is only a sub-assembly of the final product. The specification of the final end product might differ from this specification.

2 Touch Sensor and Cover Glass

2.1 Technical Parameters

Screen size	55.0 inch / 139.7 cm
Format	wide
Composite	Glass / Film / Film
Outline dimensions	1272.80 x 743.60 x 4.29 mm (WxHxT)
Active area	1218.60 x 689.40 mm (WxH)
Cover glass	3.8 mm
Glass Material	Soda-lime thermal strengthened
Glass Surface	Anti-Glare (etching) Gloss 80±15
Glass Surface Hardness	≥ 6H
Print	ceramic black (RAL9005) printing on the rear side of the glass
Bending radius of tail	R = 2 mm recommended
Transmissivity	80% (min.)
Haze	10% (max.)
Operating temperature and humidity	-20 ~70°C, 20 ~80% RH
Storage temperature and humidity	-20 ~70°C, 10 ~90% RH
Tail connector	2x HIROSE, TF06L-80S0.5SH(800) 2x HIROSE, TF28A-96S-0.5SH

2.2 Reliability Tests

Low Temperature Storage Test	-20°C / 96h
High Temperature Storage Test	70°C / 96h
High Temperature / High Humidity Test	40°C, 90% RH for 96h
Thermal Shock Test	-20°C / 70°C, 60min each, 5 cycles

3 Recommended Touch Controller

The recommendation for this PCAP solution is a controller based on ILI2316. Please ask your local DATA MODUL sales representative for further details.

4 Optical Inspection Criteria and Handling Recommendations

4.1 Optical Inspection Criteria

For details on the optical inspection criteria, please refer to DATA MODULs Outgoing Spec or ask your local DATA MODUL sales representative.

4.2 Handling Recommendations

Precautions for operation

- Do not put a heavy, hard or sharp object on the product
- Do not bend the product in order to assure the reliability
- Do not put one product on the other. Otherwise, it may cause the product to be scratched
- Do not use any organic solvent acid or alkali solution.

Precautions for mounting

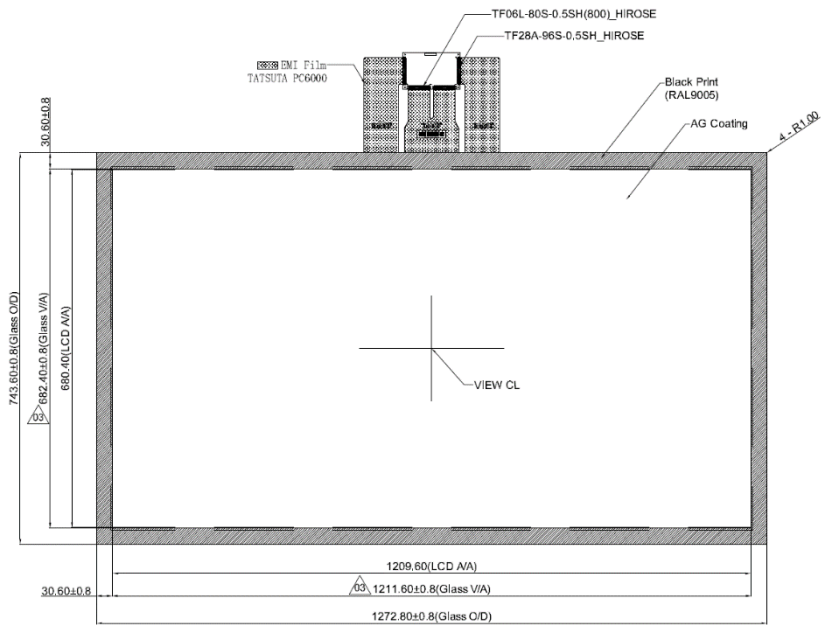
- The panel should be mounted using a configuration that either holds the panel by all four corners or by all four sides
- The bezel edge must be positioned outside the active area. The bezel may cause false activation if the edge overlaps the active area
- Any mounting configuration should ensure that there is no twisting force applied to the panel
- 1mm distance between TFT screen and touch panel is recommended

Precautions for tail

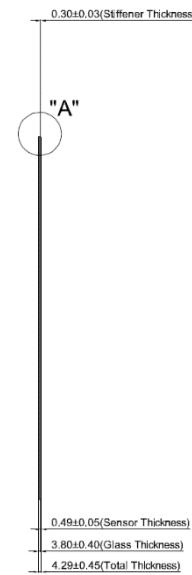
- In order to avoid damaging and malfunction of the sensor, please don't bend the FPC area next to the panel
- Excess or repeated bending of the FPC connector should also be avoided

5 Appendix A: Technical Drawing

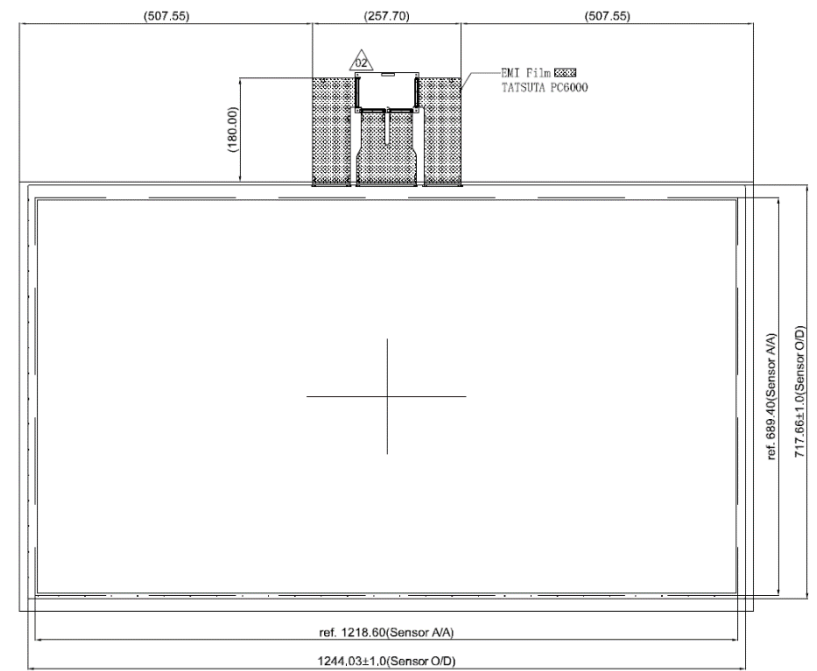
Front View



Side View



Back View



6 Revision History

Revision	Date	Author	Changes
001	2021-06-16	T. Golling	initial version
002	2021-10-29	T. Golling	Adjustment of dimensions, page 3 page 5

DATA MODUL Aktiengesellschaft
Landsberger Str. 322
80687 Munich, Germany
Tel. +49-89-5 60 17-0
Fax +49-89-5 60 17-119
www.data-modul.com

Logistics, Production & Services:
DATA MODUL Weikersheim GmbH
Lindenstrasse 8
DE-97990 Weikersheim - Germany
Phone: +49-7934-101-0
Fax: +49-7934-101-101

DATA MODUL's worldwide offices
can be found on our website:
www.data-modul.com/eu/contact-worldwide.html

